

Ductware

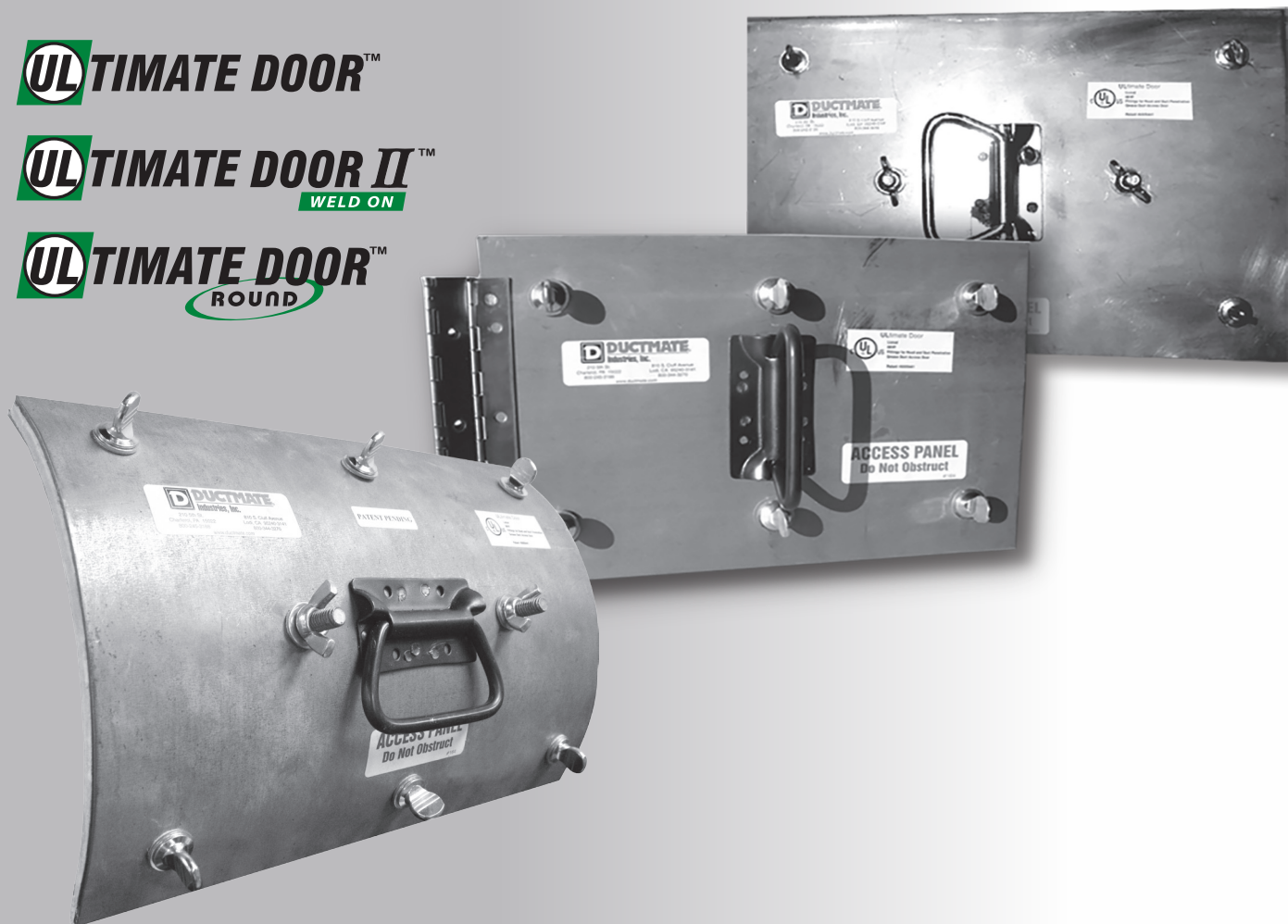
UL[®]timate Doors

By Ductmate

UL[®]TIMATE DOOR™

UL[®]TIMATE DOOR II™
WELD ON

UL[®]TIMATE DOOR™
ROUND



U.L. Rated Grease Duct Doors

Easy to Install Sandwich[®] Design / Weld On Design

- UL 1978 listed
- Dramatically reduces installation time
- No special tools required
- Available in a variety of sizes
- Grease and air tight
- Meets NFPA 96 standards

Ductware[®]
Productivity solutions with green results

ULTIMATE DOOR™

DESCRIPTION

Sandwich® Access Door for grease duct or high temperature applications.

BASIC USE

To provide easy access into high temperature air ducts and grease duct systems. This door was designed for applications requiring UL 1978 Listing.

SPECIAL CHARACTERISTICS

- UL 1978 Listed
- Easy to install sandwich design with no special tools required
- Minimal penetration into the duct
- Dramatically reduces installation time
- No welding required
- Grease and air tight
- Meets NFPA 96 Standards
- Available in a variety of sizes
- Door is completely removable for easy cleaning
- Can be used with all types of duct wrap insulation systems
- No need for any clips
- No need for any drilling
- Unique collapsible handle design for easy installation

TECHNICAL INFORMATION

a. Panels

The ULtimate Access Door consists of two layers of 11 gauge steel (**also available in Stainless 304**). Steel door must be used on steel duct and stainless door must be used on stainless duct.

b. Gasket

High temperature ceramic board, rated to 1,260°C. Completely covers the surface of the outer plate.

c. Fasteners

Two threaded fasteners are welded to the inner door and one fastener in each corner.

d. Template

Self adhesive template is provided for the exact size of duct opening required.

e. UL Door Insulation Plate

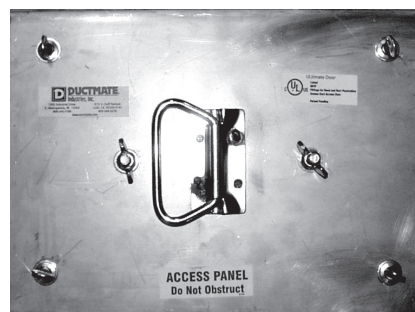
Manufactured from 16 gauge black iron. For use with a wrap system. (Sold separately or as a kit)

f. UL Door Insulation Hardware

Consists of 4, 200mm extension studs, washers, fasteners, "Do Not Obstruct" Sticker, and installation instructions. (Sold separately or as a kit)

LIMITED PRODUCT WARRANTY

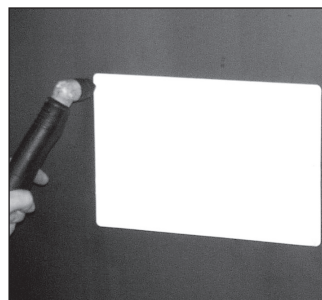
** See Back Panel



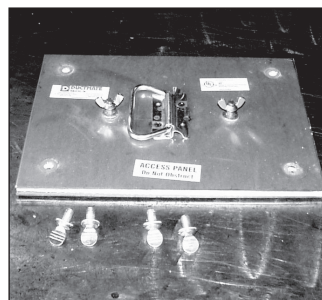
INSTALLATION INSTRUCTIONS



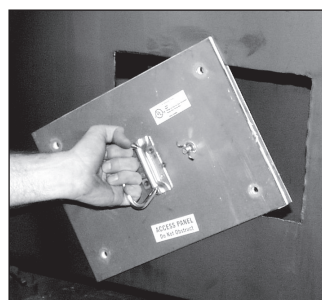
1. Peel backing off template and apply to duct in desired location.



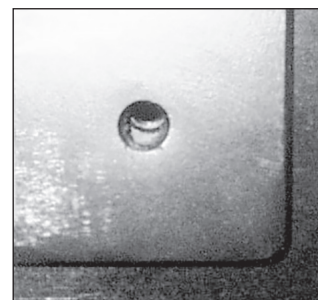
2. Cut around edge of the template.



3. Remove the perimeter fasteners from the door assembly and loosen the two center fasteners, but do not remove.*

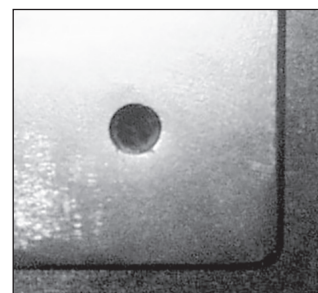


4. Insert the door into the opening at an angle and then center the door.



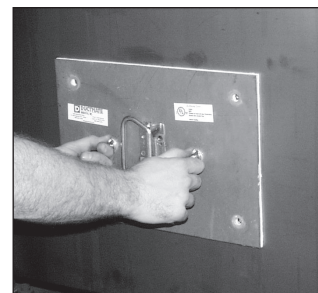
4a. NOT CENTERED

If you can see the wall of the duct through any of the corner holes, then it is not centered.



4b. CENTERED

If you can not see the wall of the duct through any of the corner holes, then it is centered.



* If using a 150mm sandwich door, all perimeter fasteners and one center fastener must be removed. Insert the door into the opening at an angle and then center the door and install fasteners.

ULTIMATE DOOR II™

WELD ON

DESCRIPTION

Weld on Access Door for grease duct or high temperature applications.

BASIC USE

To provide easy access into high temperature air ducts and grease duct systems. This door was designed for applications requiring UL 1978 Listing.

SPECIAL CHARACTERISTICS

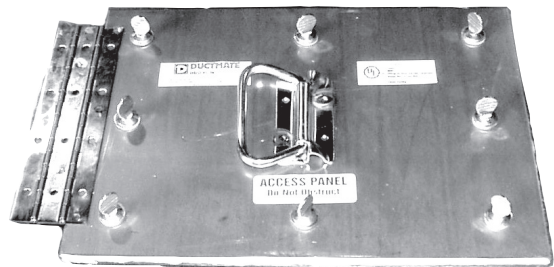
- UL 1978 Listed
- Available with optional hinge
- No special tools to remove
- Minimal penetration into the duct
- Dramatically reduces installation time
- Grease and air tight
- Meets NFPA 96 Standards
- Available in a variety of sizes
- Can be used with all types of duct wrap insulation systems
- No need for any clips
- No need for any drilling
- Unique collapsible handle design for easy installation
- Top plate is completely removable for easy cleaning

TECHNICAL INFORMATION

- Panels**
The ULtimate II WELD ON access door consists of two layers of 11 gauge steel (*also available in stainless 304*). Steel door must be used on steel duct and stainless door must be used on stainless duct.
- Gasket**
High temperature ceramic board, rated to 1,260°C.
- Fasteners**
Zinc plated fasteners.
- Template**
Self adhesive template is provided for the exact size of duct opening required.
- UL Door Insulation Outer Plate**
Manufactured from 16 gauge black iron. For use with a wrap system. (Sold separately or as a kit)
- UL Door Insulation Hardware**
Consists of 4, 200mm extension studs, washers, fasteners, "Do Not Obstruct" Sticker, and installation instructions. (Sold separately or as a kit)

LIMITED PRODUCT WARRANTY

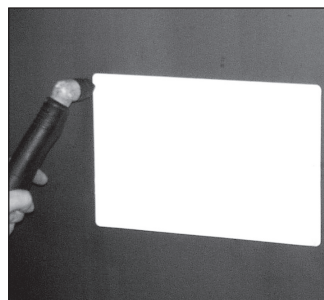
** See Back Panel



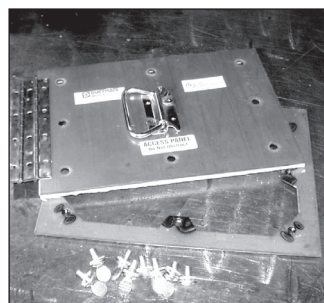
INSTALLATION INSTRUCTIONS



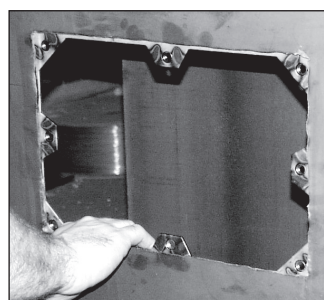
1. Peel backing off template and apply to duct in desired location.



2. Cut around edge of the template.



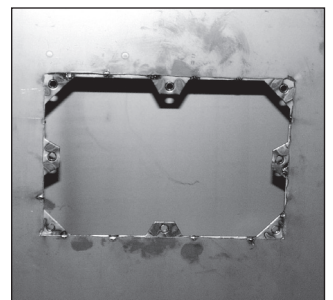
3. Remove the fasteners and separate door from frame.



4. Center the frame around the opening.



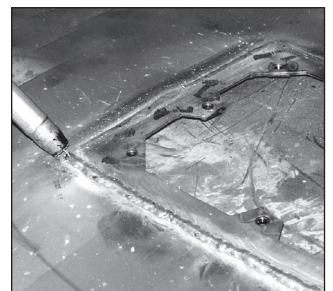
5. Attach with tack welds 50mm apart.



6. Correctly installed frame.



7. Install the fasteners with washers. For hinged door, position hinge on duct wall and plug weld.



* If using the frame on the outside of the duct, a continuous liquid tight weld is required. Care should be taken to not warp the frame when welding.



DESCRIPTION

Sandwich® Access Door for grease duct or high temperature applications.

BASIC USE

Ultimate Round Door is specifically designed for use in round grease duct. Manufactured to exact diameter tolerances to insure a tight seal. This door was designed for applications requiring UL 1978 Listing.

SPECIAL CHARACTERISTICS

- UL 1978 Listed
- Easy to install Sandwich design with no special tools required
- Minimal penetration into the duct
- Dramatically reduces installation time
- No welding required
- Grease, air, and liquid tight
- Meets NFPA 96 standards
- Holes line up easily with adjustable fastening system
- Door is completely removable for easy cleaning
- Can be used with all types of duct wrap insulation systems
- No need for any clips
- No need for any drilling
- Unique collapsible handle design for easy installation

TECHNICAL INFORMATION

a. Panels

The ULtimate Round Door consists of two layers of 11 gauge steel (**also available in Stainless 304**). Steel door must be used on steel duct and stainless door must be used on stainless duct.

b. Gasket

High temperature ceramic board, rated to 1,260°C. Completely covers the surface of the outer plate

c. Fasteners

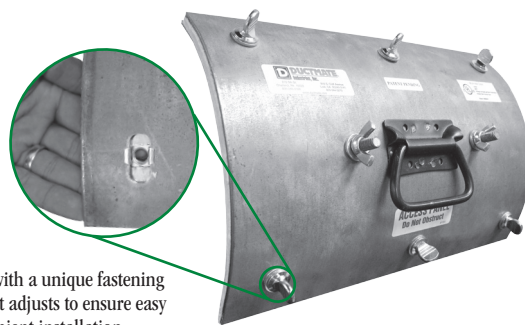
Two threaded fasteners are welded to the inner door. Fasteners are spaced around the perimeter of the door.

d. Template

Self adhesive template is provided for the exact size of duct opening required.

LIMITED PRODUCT WARRANTY

** See Back Panel



Designed with a unique fastening system that adjusts to ensure easy and convenient installation.

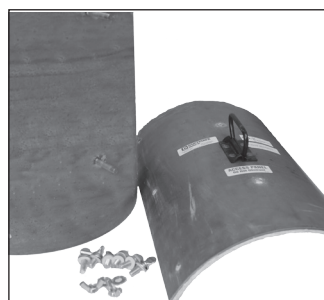
INSTALLATION INSTRUCTIONS



1. Peel backing off template and apply to duct in desired location.



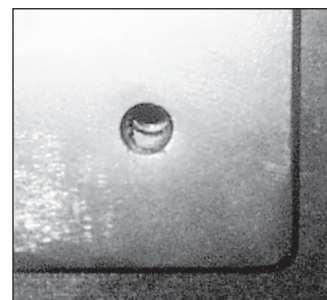
2. Cut around edge of the template.



3. Remove the perimeter fasteners from the door assembly and loosen the two center fasteners, but do not remove.

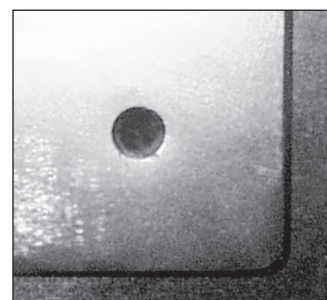


4. Insert the door into the opening at an angle and then center the door.



4a. NOT CENTERED

If you can see the wall of the duct through any of the corner holes, then it is not centered.



4b. CENTERED

If you can not see the wall of the duct through any of the corner holes, then it is centered.



5. Tighten all fasteners

PACKAGING INFORMATION AND SIZING GUIDELINES



Part #	Description	Opening Size (mm)	Door Size (mm)	Minimum Duct Height	Packaging Quantity	Weight
D66UL*	UL Door Only	152 x 152	203 x 203	330mm	5	11.5kg
D66ULWS*	UL Door with Insulation Kit and 305mm x 305mm Outer Plate	152 x 152	203 x 203	330mm	5	20.4kg
D106UL*	UL Door Only	254 x 152	305 x 203	356mm	5	17.7kg
D106ULWS*	UL Door with Insulation Kit and 406mm x 305mm Outer Plate	254 x 152	305 x 203	356mm	5	28.6kg
D1010UL	UL Door Only	254 x 254	305 x 305	483mm	5	25.9kg
D1010ULWS*	UL Door with Insulation Kit and 406mm x 406mm Outer Plate	254 x 254	305 x 305	483mm	4	31.8kg
D128UL*	UL Door Only	305 x 203	356 x 254	432mm	5	25.4kg
D128ULWS*	UL Door with Insulation Kit and 457mm x 356mm Outer Plate	305 x 203	356 x 254	432mm	4	31.8kg
D1814UL*	UL Door Only	457 x 356	508 x 406	660mm	2	21.8kg
D1814ULWS*	UL Door with Insulation Kit and 610mm x 508mm Outer Plate	457 x 356	508 x 406	660mm	2	30.8kg
D2020UL*	UL Door Only	508 x 508	559 x 559	889mm	1	16.3kg
D2020ULWS*	UL Door with Insulation Kit and 660mm x 660mm Outer Plate	508 x 508	559 x 559	889mm	1	22.2kg
D2418UL*	UL Door Only	610 x 457	660 x 508	813mm	1	18kg
D2418ULWS*	UL Door with Insulation Kit and 762mm x 610mm Outer Plate	610 x 457	660 x 508	813mm	1	23kg
ULINSULKIT	Kit 1: Four 203mm extension studs, washers, fasteners, "Do Not Obstruct" stickers, and installation instructions				5	0.5kg
OP_UL* INSERT SIZE	Kit 2: UL Door Outer Plate				1	Consult Ductware

* Insert S4 for Stainless Steel and BI for Black Iron.



Part #	Description	Opening Size (mm)	Door Size (mm)	Minimum Duct Height	Packaging Quantity	Weight
DW66UL* DWH66UL*	UL Door Only	152 x 152	203 x 203	229mm	5	9.1kg 10.4kg
DW66ULWS* DWH66ULWS*	UL Door with Insulation Kit and 305mm x 305mm Outer Plate	152 x 152	203 x 203	229mm	5	12.1kg 19.3kg
DW106UL* DWH106UL*	UL Door Only	254 x 152	305 x 203	229mm	5	17.3kg 14.7kg
DW106ULWS* DWH106ULWS*	UL Door with Insulation Kit and 406mm x 305mm Outer Plate	254 x 152	305 x 203	229mm	5	15.9kg 25.6kg
DW1010UL* DWH1010UL*	UL Door Only	254 x 254	305 x 305	330mm	5	18.1kg 18.6kg
DW1010ULWS* DWH1010ULWS*	UL Door with Insulation Kit and 406mm x 406mm Outer Plate	254 x 254	305 x 305	330mm	4	24kg 24.9kg
DW128UL* DWH128UL*	UL Door Only	305 x 203	356 x 254	279mm	5	21kg 18.7kg
DW128ULWS* DWH128ULWS*	UL Door with Insulation Kit and 457mm x 457mm Outer Plate	305 x 203	356 x 254	279mm	4	24kg 24.4kg
DW1814UL* DWH1814UL*	UL Door Only	457 x 356	508 x 406	432mm	2	14.8kg 15.4kg
DW1814ULWS* DWH1814ULWS*	UL Door with Insulation Kit and 610mm x 508mm Outer Plate	457 x 356	508 x 406	432mm	2	24kg 23.6kg
DW2020UL* DWH2020UL*	UL Door Only	508 x 508	559 x 559	584mm	1	15.9kg 16.7kg
DW2020ULWS* DWH2020ULWS*	UL Door with Insulation Kit and 660mm x 660mm Outer Plate	508 x 508	559 x 559	584mm	1	15.9kg 16.7kg
DW2418UL* DWH2418UL*	UL Door Only	610 x 457	660 x 508	533mm	1	10.7kg 11kg
DW2418ULWS* DWH2418ULWS*	UL Door with Insulation Kit and 762mm x 610mm Outer Plate	610 x 457	660 x 508	533mm	1	16.3kg 16.7kg
ULINSULKIT	Kit 1: Four 203mm extension studs, washers, fasteners, "Do Not Obstruct" stickers, and installation instructions				5	0.5kg
OP_UL* INSERT SIZE	Kit 2: UL Door Outer Plate				1	Consult Ductware

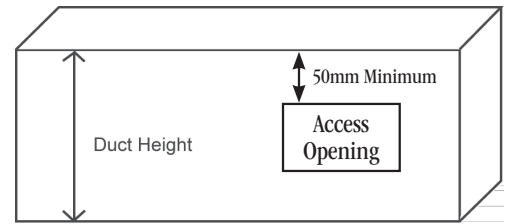
* Insert S4 for Stainless Steel and BI for Black Iron. Items in **Bold** refer to hinged doors.



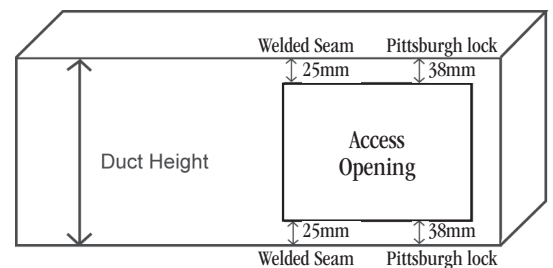
Part #	Description	Opening Size (mm)	Door Size (mm)	Packaging Quantity	Weight
DR106†UL*	Round UL door 254mm x 152mm	254 x 152	305 x 203	5	17.7kg
DR128†UL*	Round UL door 305mm x 203mm	305 x 203	356 x 254	5	25.4kg
DR1814†UL*	Round UL door 457mm x 356mm	457 x 356	508 x 406	2	21.8kg

† Insert pipe diameter. (all doors are available for duct diameters of 305mm and larger in 50mm increments.)

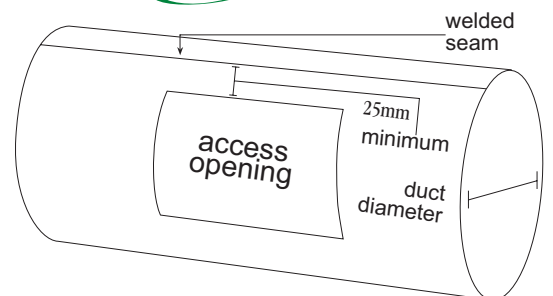
* Insert S4 for stainless steel and BI for black iron. (Example: DR10612ULBI for a 254 x 152mm black iron door for 305mm diameter duct.)



In order to use the minimum duct height, the door must be installed with it's longest dimension running horizontally along the length of the duct. If the minimum duct height is used, the top of the opening must be 51mm from the top of the duct. For every inch over the minimum duct height, the opening can be lowered 25mm from the top of the duct.



Unlike the ULtimate Sandwich® style door, the ULtimate II WELD ON on door requires no additional clearance. The duct only needs to be large enough to accommodate the frame. The frame extends 25mm past each side of the opening, therefore a minimum of 25mm clearance is required on each side of the opening when duct incorporates a welded longitudinal seal. To allow for manufacturing variances in the duct 25 - 38mm clearance is recommended on each side of the opening when duct incorporates a Pittsburgh lock seam. Remember an internal longitudinal seam could take up extra space and prevent the frame from properly attaching in the case of a minimum duct height, the door must be installed with its longest dimension running horizontally along the length of the duct.



The door frame extends 25mm around the opening; therefore, a minimum of 25mm clearance is required on either side of the welded seam. Cutting the opening too close to the welded seam may lead to leakage.

*** * LIMITED PRODUCT WARRANTY**

Ductmate warrants that the ULtimate™ Door and the ULtimate™ Door II when properly installed and maintained, will be free from defects in material and workmanship, and will comply with all written specifications made by Ductmate at the time of sale. Ductmate's warranty shall run for a period of one year from the date of manufacture.

Warranty Product Limitation

The warranty stated above is in lieu of all other warranties, express or implied, including but not limited to the implied warranties of MERCHANTABILITY AND FITNESS FOR A PARTICULAR PURPOSE. Although Ductmate may have suggested the product, or provided written or oral advice to the Purchaser, it is the Purchaser's responsibility to test and determine the suitability of the ULtimate™ Door and the ULtimate™ Door II for the intended use and purpose, and Purchaser and/or its customer assumes all risk and liability whatsoever regarding such suitability.

Limitation of Liability

In the event of a breach of the above warranty, Ductmate's sole obligation, and Purchaser's sole and exclusive remedy, shall be, at Ductmate's option, repair or replacement of any defective products, or refund of an applicable portion of the purchase price. Ductmate shall have no liability for costs of removal or re-installation of the product. The Purchaser agrees that no other remedy, including but not limited to loss of profits, loss sales, injury to person or property, or any other special, incidental or consequential damages, shall be available to the Purchaser for any claim arising out of this Agreement, regardless of whether such claim is made in contract or in tort, including strict liability in tort. In no event will Ductmate be obligated to pay damages to the Purchaser in any amount exceeding the purchase price that the Purchaser paid to Ductmate for the allegedly defective product. This product must be used in conjunction with the correct duct diameter.